

- ▲ In-Service Suspension (2)
- ⊘ Demolished NR Suspension (1)
- Preserved Suspension (1)

Suspension Bridges



HISTORIC BRIDGE #02236

COUNTY ROAD 283

STONE COUNTY

SUSPENSION

CROSSES - SOUTH SYLAMORE CREEK

DATE OF CONSTRUCTION - 1943

BUILDER - ARKANSAS STATE HIGHWAY AND TRANSPORTATION DEPARTMENT

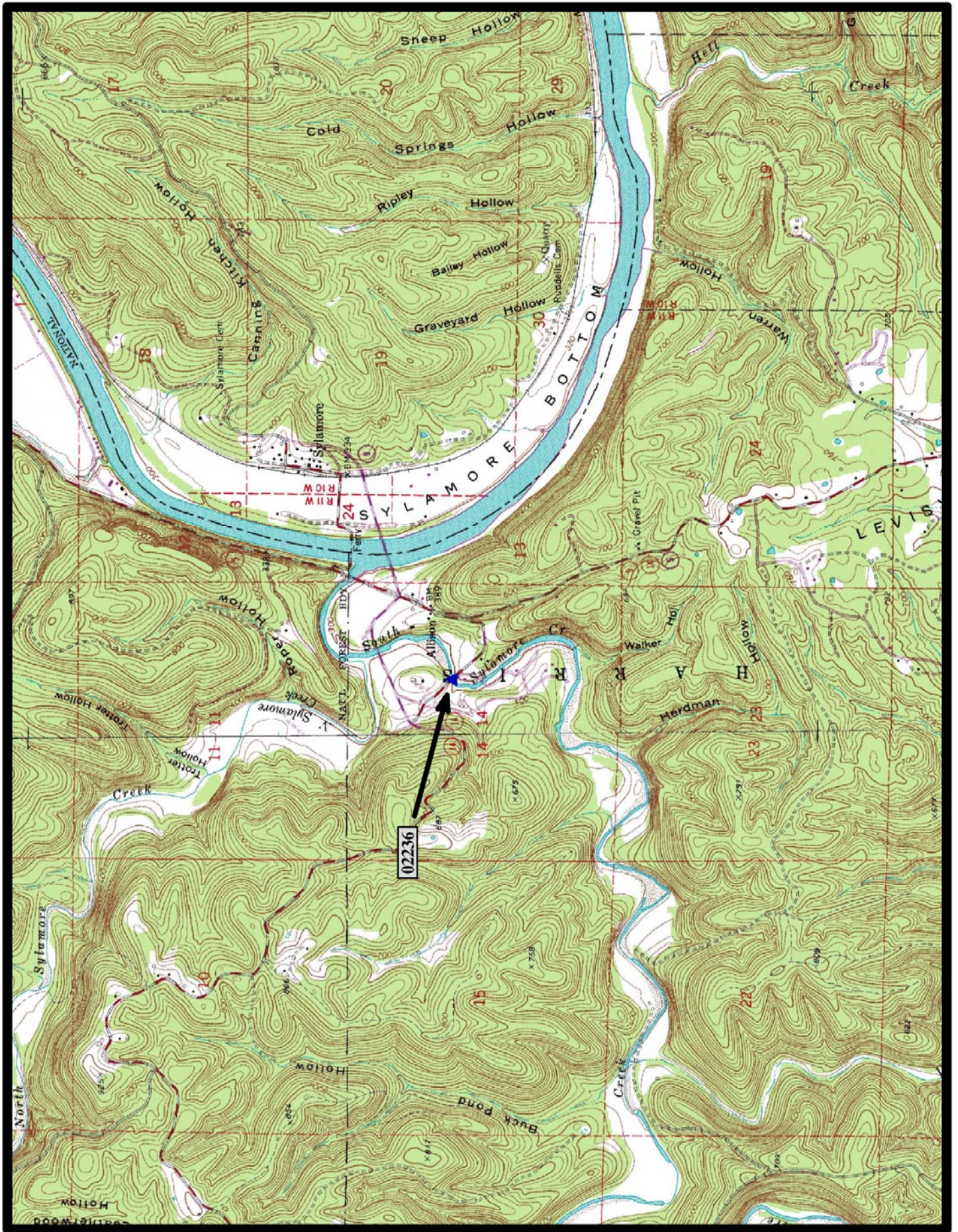
HISTORIC BRIDGE INVENTORY DATE - 1987

SHPO NUMBER - ST0252

HAER NUMBER - AR-88

DATE LISTED ON NATIONAL REGISTER - 11/18/1999

LAT./LONG. 35:56:09.50, -92:07:17.04

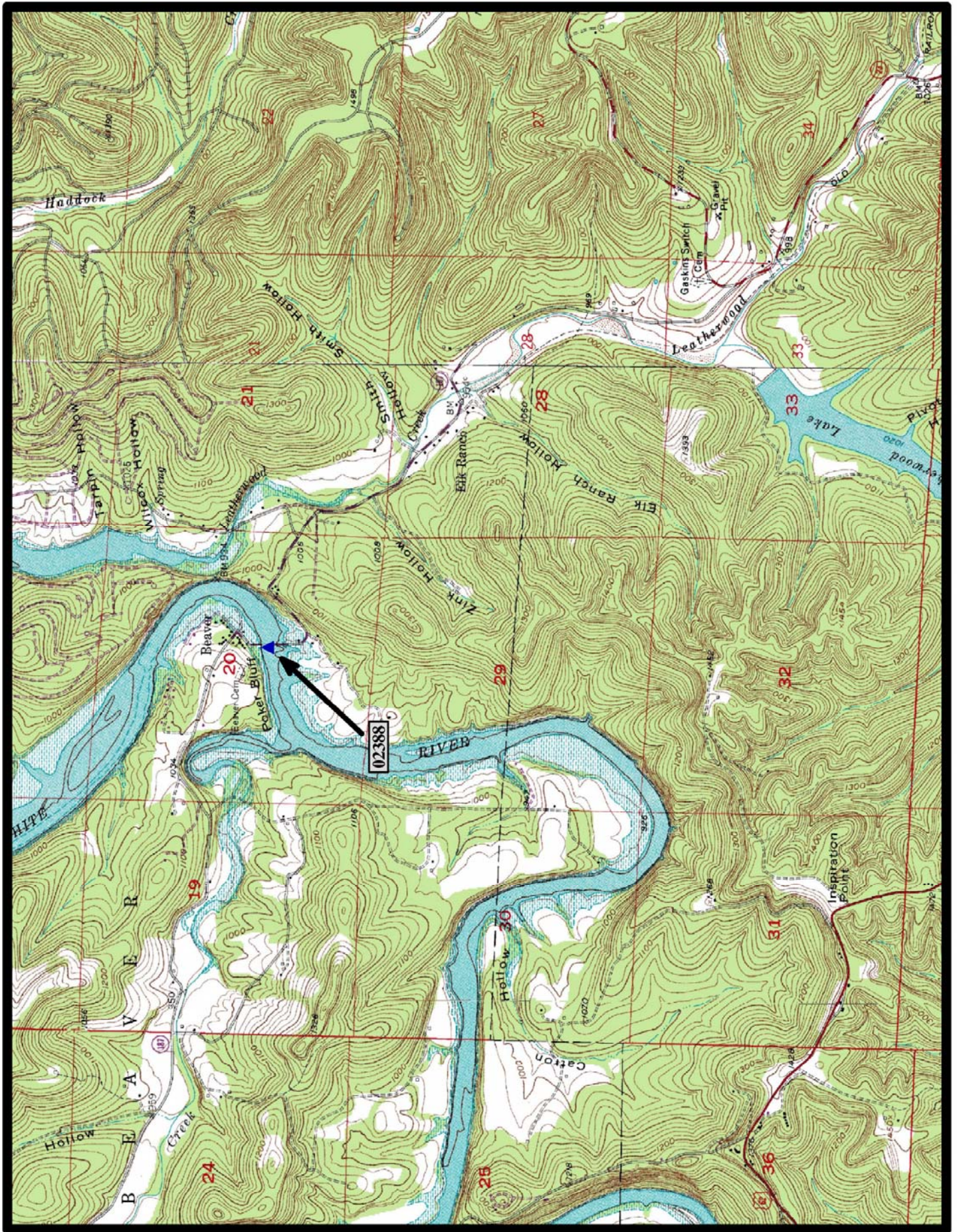


←
North

Sylamore 7.5 min. Quad



HISTORIC BRIDGE #02388
STATE HIGHWAY 187
CARROLL COUNTY
SUSPENSION
CROSSES - TABLE ROCK LAKE
DATE OF CONSTRUCTION - 1949
BUILDER - PIONEER CONSTRUCTION COMPANY, MALVERN, AR
HISTORIC BRIDGE INVENTORY DATE - 2000
SHPO NUMBER - CR1042
HAER NUMBER - AR-53
DATE LISTED ON NATIONAL REGISTER - 9/6/1990
LAT./LONG. 36:28:18.37, -93:46:06.93



North

Beaver 7.5 min. Quad



**PRESERVED HISTORIC BRIDGE - HAGGARDS FORD
NEXT TO COTTONWOOD ROAD
BOONE COUNTY**

SUSPENSION

CROSSES - BEAR CREEK

DATE OF CONSTRUCTION - 1938

BUILDER - WORKS PROGRESS ADMINISTRATION (WPA)

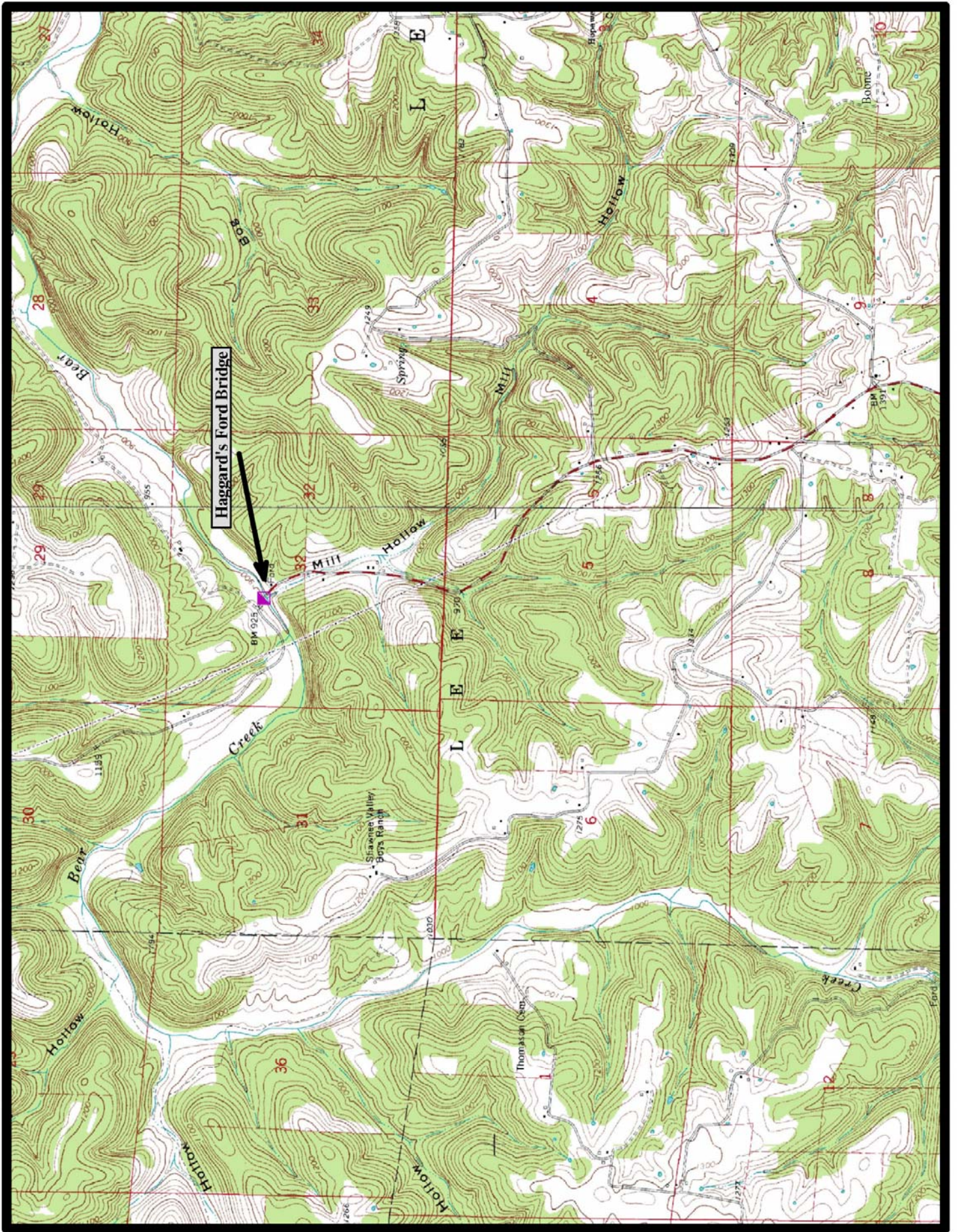
HISTORIC BRIDGE INVENTORY DATE - 1987

SHPO NUMBER - BO0076

HAER NUMBER -

DATE LISTED ON NATIONAL REGISTER - 6/30/1995

LAT./LONG. 36:20:43.95, -93:07:51.28



North

Batavia 7.5 min. Quad